

9to5[®]

seating

9to5[®]
seating

3211 Jack Northrop Avenue
Hawthorne, CA 90250
Tel. 310.220.2500 | Fax. 310.220.2501
email: sales@9to5seating.com

www.9to5seating.com

follow us: @9to5seating   



D3 Family of Brands

9to5[®]
seating

 MADE IN AMERICA
SEATING

@NCE
furniture



HAWTHORNE, CALIFORNIA

Corporate Headquarters, Assembly Plant



A perpetually forward-thinking company

About 9to5 Seating

9to5 Seating is a vertically-integrated, privately owned company, founded in 1986, which specializes in the design and production of ergonomic office seating to accommodate the rigorous demands of today's office environments.

9to5 Seating presents an extensive collection of executive, task, guest, conference, stool and lounge seating. Customization is an everyday demand that 9to5 Seating welcomes; seats, controls, arms, chair adjustments, finishes, and upholstery options are plentiful.

9to5 Seating combines its state-of-the-art, in-house manufacturing systems with a commitment to continuous improvements in all phases of the operation. With over 500,000 sq. ft. of manufacturing resources, we are confidently empowered to deliver products offered at unparalleled pricing, with quality built into every phase of manufacturing.

New in 2017

In 2017, 9to5 Seating introduced five brand new innovative seating options for use in executive, conference, task, lounge & waiting areas. Seating solutions for your dynamic workstyle.

SOL*



Model 3680
Page 8

LUNA*



Model 3460
Page 10

MIMI*



Model 1056-GT
Page 58

ACCLAIM



Model 2780
Page 46

CORE



Model 2260
Page 12

DIDDY



Model 2450
Page 48

COSMO
STRIPED MESH



Model 3260
Page 20

COSMO
UPHOLSTERED



Model 3220
Page 18

CYDIA
UPHOLSTERED



Model 3300
Page 14

SHUTTLE
STOOLS



Model 1210-ST24/27/30
Page 68

SOPHIE
SEATING & TABLES



Models 8111/8193
Page 76

ZOOM



Model 1115
Page 60

NEW POWDER
COAT COLORS

For Bella, Link,
Shuttle and Sophie



DG - Gray, MB - Brown,
GM - Gunmetal, WT - White

*Chairs available in Q3 2017

NEW

sol

THE FUTURE AT A GLANCE



REAR VIEW



SIDE VIEW



ANGLED VIEW

Features:

- Fast-forward to the next millennium with this ergonomic masterpiece
- Options include two aluminum finishes: Polished Aluminum and Silver powder coat finish
- Three plastic accent colors available: Black, Dark Gray, Light Gray
- W2 - weight balanced 3:1 back to seat synchronous movement control with 4 position back-travel limiting lock
- Lifetime warranty on structural and mechanical components
- Available in Q4 2017

Quick Ship: ExpressShip fabrics ship as fast as 5 business days.

GSA SIN# Pending

NEW

luna

TASK MEETS ERGONOMIC COMFORT



Adjustable lumbar (optional)

Built-in seat depth adjustment

Multi-position recline with safety lock

Multi-adjust integrated control mechanism

Mesh back construction

Ergonomic contoured seat

Choose from polished aluminum or black nylon standard base



Shown: 3460-W1-A44-M22-C-C6



BACK VIEW



SIDE VIEW



ANGLED VIEW

Features:

- Sculptured blend of materials into a functional seating experience
- Clean lines, functional comfort and valued priced
- Lifetime warranty on structural and mechanical components
- High resilient molded foam seat
- Attractive mid-profile nylon base
- W1 control with auto-Balance tension adjustment utilizes the weight of the user to balance resistance of back. 3:1 back to seat synchronous movement with 2 position back lock
- Available in Q4 2017

Quick Ship: ExpressShip fabrics and M2 mesh to ship as fast as 5 business days.

GSA SIN# pending

NEW **core** CONTEMPORARY LINES FOR YOUR WORKSPACE



Three different arm options in addition to armless and guest models

Black or gray accent colors

Weight balanced, knee tilt or Synchro control are all warranted up to 300 lbs.

Stylish hubless casters available



Molded foam back over mesh suspension

Ratchet back height adjustment, offers ability to raise or lower the backrest for the greatest comfort

Stylish durable poly outer back

Shown: 2260-W1-A22-PBA-C6-BA11B

Features:

- Matching accent color, 6-way adjustable arms show great design with ergonomic performance
- New W1 "sit and forget" weight-balanced control utilizes the weight of the user to balance the back tension
- New Y5 control for the top-of-line in ergonomic function, full synchro control with a 2:1 seat-to-back ratio, infinite position back angle lock and built in seat depth adjustment
- Lifetime warranty on structural and mechanical components



MID-BACK 2260



GUEST 2260-GT

Quick Ship: ExpressShip fabrics, vinyls and L3 leather ship in 5 business days.

GSA SIN# 711-18

NEW

cydia

ORGANIC DESIGN MEETS
ERGONOMIC EXCELLENCE



Three frame colors in Black, Gray and White

durable high profile Nylon base standard



Combine any one of thousands of fabrics with 14 different mesh colors to form the synergy of a bold new look

Fixed loop arms or 6-way adjustable T-arms for general office, stools and management chair models

Choice of controls include Swivel-tilt and Knee-tilt tailored to Cydia's design

Shown: 3300-S3-A34-PBA-UP-M11-C6

Features:

- Nature's influence is the foundation of Cydia's design inspired from the shape of a butterfly's wings
- Swivel-tilt and Knee-tilt control with A34 fixed loop arm or A35 six-way adjustable arms promote ergonomic comfort
- Detailed stitching adorns the sides, and triple stitching not only looks great, but tightly molds the cover and mesh into a single form
- Lifetime warranty on structural and mechanical components



MID-SIZE 3300



FULL-SIZE 3310



STOOLS 3306/3308



GUEST 3300-GT

Quick Ship: Express fabrics and M1 mesh ship as fast as 5 business days.

GSA SIN# 711-18

NEW

cydia mesh

ORGANIC DESIGN MEETS
ERGONOMIC EXCELLENCE



Premium mesh seats and backs in 14 colors

Optional lumbar offers subtle but effective support following the form of the human body

Three frame colors in Black, Gray and White

Durable high profile bases offer choices for either casters or Stationary Base Glides



Six-way adjustable T-arms or fixed loop arms for general office, stools and management chair models

Optional cast aluminum bases available in Black, Silver or Polished

Shown: 3300-S3-PBA-AM-M38-C6

Features:

- Nature's influence is the foundation of Cydia's design inspired from the shape of a butterfly's wings
- Organic meets light and elegant design with breathable premium mesh now available with upholstered seat and/or back options
- Swivel-tilt and Knee-tilt control with A34 fixed loop arm or A35 six-way adjustable arms promote ergonomic comfort
- See materials section for upholstery choices
- Lifetime warranty on structural and mechanical components



MID-SIZE 3300



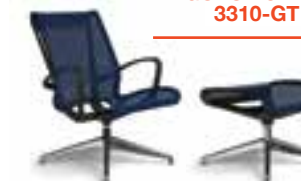
FULL-SIZE 3310



STOOLS 3306/3308



GUEST CHAIR 3310-GT



LOUNGE & OTTOMAN

Quick Ship: ExpressShip fabrics and M1 mesh ship as fast as 5 business days.

GSA SIN# 711-18

NEW

cosmo

THIN AND SLEEK DEFINES THIS BOLD STYLE



Robust and newly styled two-way arm with soft touch polyurethane arm caps

11 position multi-lock with built-in safety return features

27" stylish 5 spoke polished aluminum base

60mm heavy duty casters standard



Thin style, detailed stitching upholstered in leather or polyurethane

Elastomeric mesh under the cover follows the form of the human body for comfort & support

Integrated seat slider as standard feature

2 position forward seat angle adjustment mechanism

Synchro tilt - 2 paddle featuring a 2.6:1 back to seat tilt ratio

Shown: 3220-X2-A38-UB-C6

Features:

- Cosmo's slim profile and refined European style offers a fresh look to conference rooms or executive offices
- X2 synchro-tilt control with 11 position tilt lock and choice of A38 two-way adjustable arms to achieve ergonomic comfort
- Optional fixed arms
- See materials section for upholstery choices
- Lifetime warranty on structural and mechanical components



MID-BACK 3220



HIGH-BACK 3230



GUEST 3220-GT

Quick Ship: Express polyurethanes and leather ship as fast as 5 business days.

GSA SIN# 711-18

NEW

cosmo mesh

CONTEMPORARY STYLE,
ELEGANCE AND COMFORT



Subtle but effective lumbar support follows the form of the human body

Seat forward tilt adjustment mechanism

11 position multi-lock with built-in safety return feature

60mm heavy duty casters standard



Tailored mesh offered in 10 colors including 4 new striped patterns in red, green, blue and gray

Robust and newly styled two-way arm with soft touch polyurethane arm caps

Integrated seat slider as standard feature

Synchro tilt - 2 paddle featuring a 2.6:1 back to seat tilt ratio

27" stylish 5 spoke aluminum base

Shown: 3260-X2-A38-MB-MS6-C6

Features:

- Cosmo's slim profile and refined European style offers a fresh look to conference rooms or executive offices
- X2 synchro-tilt control with 11 position tilt lock and A38 two-way adjustable arms to achieve ergonomic comfort
- Optional fixed arms
- See materials section for upholstery choices
- Lifetime warranty on structural and mechanical components



MID-BACK 3250



HIGH-BACK 3260



GUEST 3250-GT

Quick Ship: ExpressShip fabrics and M1 mesh ship as fast as 5 business days.

GSA SIN# 711-18

vesta

EXCELLENCE IN TOTAL ERGONOMICS



Choice of 2-way or 6-way adjustable ergonomic arms with fingertip controls

Standard synchro-tilt control features fingertip adjustments

Integrated seat slider as standard feature

75mm heavy duty casters for use on hard floors or low-to-medium pile carpet



High-grade mesh over frame creating ergonomic lower back support

Choice of mesh or upholstered seat

Seat forward tilt adjustment mechanism

Attractive cast aluminum high profile base

Shown: 3060-X1-A30-PF-M11



MID-BACK 3060



HIGH-BACK 3080



STOOLS 3061/3063
3066/3068

Features:

- Standard with a synchro-tilt control which provides simple, intuitive ergonomic support and comfort
- Standard two position seat tilt adjustment
- Three frame finishes: Polished (PF), Black (BF) or Silver (SF)
- Mesh colors: Black (M11), Gray (M12) or Silver (M13), Green (M14), Red (M15), Blue (M16)
- See materials section for upholstery choices
- Stools available with either high or low seat height
- Lifetime warranty on structural and mechanical components

Quick Ship: ExpressShip fabrics and M1 mesh ship as fast as 5 business days.

GSA SIN# 711-18

aria

PROVIDES REVOLUTIONARY COMFORT



Integrated handle in backrest makes moving Aria chairs easy

Adjustable lumbar support (optional)

Suspension seat is a unique environmentally friendly design

Durable black nylon base is standard or upgrade to cast aluminum in black, silver or polished



Cool and comfortable, this sleek and supportive mesh is available in eight designer colors

Select from five ergonomically-adjustable arm options, armless or fixed arm

Three synchro-tilt controls are matched to each models' design

Shown: 1880-Y4-A40-M23-BA9-C6

Features:

- Aria is the answer where new ways of working require new features in seating
- Suspension seat incorporates a flexible high-performance mesh with a molded high-density foam overlay
- No wood in the structure for reduced outgassing of formaldehyde
- Seat upholstery choices include woven textiles, vinyls and leather. See materials section for mesh and upholstery options
- Standard synchro-tilt controls: mid-back versions offer the Y1 and Y3; high-back models feature the intensive Y4 control with seat slider
- Lifetime warranty on structural and mechanical components

Quick Ship: ExpressShip fabrics and M2 mesh ship as fast as 5 business days.

GSA SIN# 711-18



MID-BACK 1860



HIGH-BACK 1885



STOOLS 1886/1888



GUEST 1860-GT

theory

THE FACTS SUPPORT THEORY AS THE SMART CHOICE



Premium mesh for seats and backs in 14 colors provide a durable yet breathable experience

Adjustable lumbar support follows the form of the human body and includes an adjustable height ratchet back

Three control options and optional seat slider available to fit any ergonomic need or work environment

Attractive optional bases include Black, Silver or Polished cast aluminum



Fixed loop arms, 8-way or 10-way adjustable T-arms for general office, stool and management chair models

Black Nylon high profile base standard with 60mm casters

Shown: 2190-Y1-A10-M11-BA9-C6

Features:

- Three Synchro-tilt control options with A10 fixed loop arm, A36 8-way or A37 10-way adjustable arms
- Upholstered seat model offers another level of ergonomic comfort and styling
- Backrest is height adjustable for complete ergonomic comfort
- Organic meets stylish and elegant design with breathable premium mesh or optional upholstered seat options
- Lifetime warranty on structural and mechanical components



MID-BACK 2160



HIGH-BACK 2180



STOOLS 2166/2168



GUEST 2160-GT

Quick Ship: ExpressShip fabrics and M1 mesh ship as fast as 5 business days.

GSA SIN# 711-18

strata lite

LET STRATA FLOAT INTO YOUR OFFICE



Adjustable lumbar support allows control of height and depth

Simple synchro-tilt control



Breathable mesh on back. Mesh seat also available

Silver or black adjustable arms and bases available

Black Nylon high profile base standard with 60mm casters

Shown: 1535-Y1-A9B-BF-M01-BA2B-C4

Features:

- Strata is a great choice for managerial and executive offices
- Simple Synchro control locks back in upright position or allows it to free float
- Optional headrest available
- CAL TB 133 Fire Code approved
- Waterfall seat front promotes circulation and good health
- High quality mesh offers better lumbar support
- Lifetime warranty on structural and mechanical components



MID-BACK 1545



HIGH-BACK 1555



STOOLS 1546/1548

Quick Ship: ExpressShip fabrics and T01 mesh ship as fast as 5 business days.

GSA SIN# 711-18

strata

LET STRATA FLOAT INTO YOUR OFFICE



Optional headrest
(field installable)

Adjustable lumbar support
allows control of height and
depth

Full Heavy-Duty Synchro control



Breathable mesh on back.
Mesh seat also available

Silver or black adjustable
arms and base available

Cast aluminum spider base
with Y2 control is standard

Shown: 1580-Y2-A9B-M01-BA2B-C4

Features:

- Strata is a great choice for managerial and executive offices
- Heavy duty synchro-tilt control features a 2:1 back-to-seat tilt ratio with four position lock
- Mesh or upholstered seat option
- Waterfall seat front promotes circulation and good health
- High quality mesh offers better lumbar support
- Lifetime warranty on structural and mechanical components



MID-BACK 1555



HIGH-BACK 1560



STOOLS 1566/1568

Quick Ship: ExpressShip fabrics and T01 mesh to ship as fast as 5 business days.

GSA SIN# 711-18

vault

GOES BEYOND THE EXPECTED



Choose from eight colors for mesh back

Ratchet back height adjustment, a first for a mesh back design, offers users the ability to raise or lower the backrest for the greatest comfort

Durable black nylon base with 60mm casters standard for a long, trouble-free service life. Optional cast aluminum base available



Select from nine arm options

Seat slider standard on all models

Choice of three control options

Shown: 1460-Y1-A8B-M23-C6



MID-BACK 1460



HIGH-BACK 1480



STOOLS 1466/1468

Features:

- Vault's features allow users to personalize the comfort of their chairs
- High quality mesh conforms to the user's back, following every move with support, especially in the lumbar region
- Optional headrest available
- Backrest is height adjustable
- Stools available with either high or low seat height
- Lifetime warranty on structural and mechanical components

Quick Ship: ExpressShip fabrics and M2 mesh ship as fast as 5 business days.

GSA SIN# 711-18

brio

MESH BACK CHAIRS TAILORED TO YOU



Optional adjustable lumbar on mesh back allows height adjustment

Reverse seat slider integrated into every seat pan as standard feature

Attractive high profile nylon base on task and stool configurations



Mesh back provides continuous support over entire back while seated

Four control options

60mm heavy duty casters

Shown: 2060-Y1-A36-BA9-C6

Features:

- Brio offers advanced styling and sensible value
- Four control options to ensure a fit to every application
- Optional LB adjustable lumbar pad offers targeted lower lumbar support for all users
- Reverse seat slider adjustment standard
- Motion Active upper back moves with the user's shoulders
- Lifetime warranty on structural and mechanical components



MID-BACK 2060



STOOLS 2066/2068

Quick Ship: ExpressShip fabrics ship as fast as 5 business days.

GSA SIN# 711-18

enduro

DESIGNED FOR 24/7 MULTI-SHIFT USE,
ENDURO HOLDS STRONG



Ratchet back height adjustment

Warranted for multi-shift use

350 lb. weight capacity

Heavy duty die cast aluminum base with durable powder coated finish



MID-BACK 1960



HIGH-BACK 1980



STOOLS 1966/1068

Features:

- Enduro handles demanding 24/7 multi-shift requirements
- Heavy duty synchro-tilt or multi-function control
- Optional Ballistic Nylon applied over a portion of lower backrest for protection from utility belts
- Molded high resilient foam is used on every seat and back for ergonomic support and durability
- 10 year warranty on structural and mechanical components

Quick Ship: ExpressShip fabrics ship as fast as 5 business days.

GSA SIN# 711-18

logic plus

PLUS SIZE ERGONOMICS, TRADITIONAL TASK STYLING - AN UNBEATABLE VALUE



a. Logic 1760 Standard

Ratchet back height adjustment 4" and fully upholstered back

5" thick high resilient molded foam seat is 25" wide

Heavy duty multifunction mechanism with seat slider standard

23.5" back width high resilient molded foam seat & back

Choose from armless, the heavy duty 4-way, a pivoting 10 way or the A90 breakaway arms



26" diameter heavy-duty 5-star base

Shown: 1790-M2-A90-C4

Features:

- Logic Plus is warranted up to 500 lbs.
- 25" wide seat offers ample room and complete comfort
- Meets or exceeds ANSI-BIFMA X5.11-2015 Large Occupant Office Chair Tests including Backrest Strength, Drop Test, Tilt Mechanism, Arm Strength and Vertical Arm Strength
- Additional durability options include ballistic nylon upholstery over a portion of the lower back for protection from utility belts
- A90 breakaway arm rotates back for ease of access
- 10 year warranty on structural and mechanical components



PLUS-SIZE 1790



ARMLESS 1790



1790 WITH A90 BREAKAWAY ARMS



1790 BALLASTIC NYLON

Provides protection from utility belts

Quick Ship: ExpressShip fabrics ship as fast as 5 business days.

GSA SIN# 711-18

logic

ERGONOMICS, TRADITIONAL TASK
STYLING AN - UNBEATABLE VALUE



Ratchet back height
adjustment with M1,
R1, Y2 and P1 controls

Five control options



4" thick high resilient
molded foam on
every seat & back

Choose from six arm
options

Attractive spider base

Shown: 1760-S2-A4-C1S



MID-BACK 1760



HIGH-BACK 1780



STOOLS 1766/1768

Features:

- Logic offers functions and ergonomics at a great price
- A6 and A7 arm options feature Ura-Soft® arm pads with height adjustment, pivot and sliding arm pads
- Waterfall seat front promotes circulation and good health
- Seat slider optional
- Optional edge protector helps minimize wear and tear from intensive use or specialized work environments
- Stool models 1766 and 1768 features P1 posture back control with ratchet back height adjustment
- Lifetime warranty on structural and mechanical components

Quick Ship: ExpressShip fabrics ship as fast as 5 business days.

GSA SIN# 711-18

precept

BREADTH OF CONFIGURATIONS
WITH AN UNPARALLELED VALUE



Ratchet back height
adjustment with M1,
R1, Y2 and P1 controls

250 lb. weight capacity



Upholstered outer back

Choose from six arm
options

High resilient molded
foam on every seat

Attractive spider base

Shown: 1725-B2-A4-C1S



LOW-BACK 1725



STOOLS 1726/1728



GUEST

Features:

- 2.5" of high resilient molded foam on seat
- Seat slider and six control options ranging from basic to multi-function
- R1, M1, Y2 and P1 controls feature ratchet back height adjustment for easy, seated adjustment of back height
- A6 and A7 arm options feature Ura-Soft® arm pads with height adjustment, pivot and sliding arm pads
- Waterfall seat front promotes circulation and good health
- Lifetime warranty on structural and mechanical components

Quick Ship: ExpressShip fabrics ship as fast as 5 business days.

GSA SIN# 711-18

agent

LENDING COMFORT, DURABILITY
AND VALUE TO EVERY PROJECT



Ratchet back height
adjustment with M1,
R1, Y2 and P1 controls



Plastic protective
outer back cover

Choose from eight
arm options

High resilient molded
foam on every seat

Attractive spider base

Shown: 1660-B2-A4-C1

Features:

- Agent offers cost effective features and highly adjustable ergonomic functions
- High resilient molded foam on every seat and back
- Optional seat slider available
- Five control options exactly match project needs
- Lifetime warranty on structural and mechanical components



LOW-BACK 1425



MID-BACK 1660



STOOLS 1426/1428



GUEST 1660-GT

Quick Ship: ExpressShip fabrics ship as fast as 5 business days.

GSA SIN# 711-18

NEW

acclaim

CONTEMPORARY EUROPEAN STYLING
WITH SUBTLE DETAILING



New polished arm style
with upholstered caps

Waterfall seat and dual-
density foam provides
plush and firm support

Weight balanced, heavy duty
synchro or full synchro with
independent back angle
adjustment available

60 mm chrome accented
casters standard with
polished base upgrade

Top-grain leather upholstery or
extensive fabric selections

Ergonomically sculpted
seat and back cushions

Choose from five
arm options

3 independent ergonomic
control options

27" polished cast
aluminum base option

Shown: 2780-W1-A27-BA12P-C7



HIGH-BACK 2780



HIGH-BACK 2780



HIGH-BACK 2780

Features:

- Choose armless, fixed arms in polished aluminum or black polyurethane or adjustable T arms with 8 or 10-way adjustment options with sliding and pivoting arm pads
- New Y5 control for the top-of-line in ergonomic function, full synchro control with a 2:1 seat-to-back ratio, independent position back adjustment and built in seat depth adjustment
- Upholstered in either fabric or leather
- Acclaim is offered in three grades of leather. L3 and L4 all are upholstered with leather on the seating surface and polyurethane on the back and side boxing. L5 is an ALL leather cover
- Lifetime warranty on structural and mechanical components

Quick Ship: ExpressShip fabrics and L3 leather ship 5 business days.

GSA SIN# 711-18

NEW

diddy

DAZZLE YOUR CONFERENCE SPACE



Plush padding on seat and back built from high resilient molded foam

Top-grain leather upholstery or extensive fabric selections

Multiple horizontal stitches bring out the best in your fabric or leather covering

Chrome finished wraparound armrest

Simple swivel tilt control locks upright or free float

26" high profile aluminum cast base



Shown: 2450-S3-A24-C6

Features:

- Control options include S3 - Swivel tilt and the B2 basic control
- High resilient molded foam seat and back
- Offered in three grades of leather. L3 and L4 all are upholstered with leather on the seating surface and vinyl on the back and side boxing. L5 is an ALL leather cover
- Classic styling, simple, clean and elegant
- Lifetime warranty on structural and mechanical components



ARMLESS 2450



MID-BACK 2450



GUEST 2450-GT

Quick Ship: ExpressShip fabrics and L3 leather ship as fast as 5 business days.

GSA SIN# 711-18

bristol

SEAMLESS INTEGRATION INTO
YOUR OFFICE'S ARCHITECTURE



Detailed stitching and craftsmanship

Plush high resilient molded foam seat and back

Ratchet back height adjustment

Six arm options

Attractive high profile nylon base

Optional cast aluminum bases available in Black, Silver or Polished



Shown: 2360-Y1-A19-B10P-C6

Features:

- Bristol has both fixed and adjustable tasking arm options
- Offered in three grades of leather. L3 and L4 all are upholstered with leather on the seating surface and vinyl on the back and side boxing. L5 is an ALL leather cover
- Waterfall seat front promotes circulation and good health
- High resilient molded foam seat and back
- Optional seat slider
- Lifetime warranty on structural and mechanical components



MID-BACK 2360



HIGH-BACK 2380



STOOLS 2366/2368

Quick Ship: ExpressShip fabrics and L3 leather ship as fast as 5 business days.

GSA SIN# 711-18

cayman

CONTEMPORARY, ERGONOMIC,
AND BUILT WITH ATTENTION TO DETAIL



Subtle but effective lumbar support follows the form of the human body

Waterfall seat front promotes circulation and good health

Choose polished aluminum or black powder coated armrests and base



Detailed craftsmanship in upholstery with top-grain leather or fabric

Available with knee-tilt or swivel-tilt controls

Attractive cast aluminum spider base

Shown: 2810-K1-A21-BA2P-C1



MID-BACK 2800



HIGH-BACK 2810



GUEST 2800-GT

Features:

- Cayman's slim profile and refined European style offers a fresh look to conference rooms or executive offices
- Upholstered in Top-Grain leather, or an extensive selection of fabrics, over high resilient foam and a one piece shell
- Offered in L3, L4 and L5 leather options. L4 is a glove-soft, top grain Italian cowhide leather available in 10 colors. Also offered in environmentally friendly Green Hides leather in over 30 colors.
- Lifetime warranty on structural and mechanical components

Quick Ship: ExpressShip fabrics and L3 leather ship as fast as 5 business days.

GSA SIN# 711-18



Padded leather pillowcase surface

Choose from five arm options, including matching upholstered arm cap option



Detailed craftsmanship in upholstery with top-grain leather or a wide selection of fabrics and vinyls

Waterfall seat front promotes circulation and good health

Attractive cast spider base

Shown: 2610-S1-A16P-BA2B-C1

Features:

- Axis has a sleek pillowcase seat and back, upholstered in fine top-grain leather or an extensive selection of fabrics
- See materials list for upholstery choices
- High resilient foam and one piece shell offer the user an ergonomic design with style and comfort
- Axis is offered in three grades of leather. L3 and L4 are upholstered with leather on the seating surface and polyurethane on the back and side boxing. L5 is an all leather cover
- Lifetime warranty on structural and mechanical components



MID-BACK 2600



HIGH-BACK 2610



GUEST 2600-GT

cortina

SIMPLE, STRAIGHTFORWARD
ERGONOMICS AND FUNCTIONALITY



Plush padding on seat and back built from 4" of high resilient molded foam

Top-grain leather upholstery or extensive fabric selections

Ergonomically sculpted seat and back cushions

Choose from six arm options

Available with swivel-tilt, synchro-tilt or multifunction controls

Polished aluminum accented casters standard

Attractive polished aluminum base standard



Shown: 2910-S2-A19-BA19-C7

Features:

- Choose armless, fixed arms in polished aluminum or black polyurethane, or adjustable arms with sliding and pivoting arm pads
- Upholstered in either fabric or leather
- Choose from high grade leathers in three grades: L3, L4 or L5
- Attractive base guest chair option
- Lifetime warranty on structural and mechanical components



MID-BACK 2900



HIGH-BACK 2910



GUEST 2900-GT

Quick Ship: ExpressShip fabrics and L3 leather ship as fast as 5 business days.

GSA SIN# 711-18

NEW

mimi

HIGH DENSITY SEATING WITH HIGH DESIGN



Integrated lumbar and pelvic support

Integrated wall saver frame prevents rear legs and back from making contact with walls



Available with or without arms

Bent solid steel wire or tubular steel frame in automotive quality powder coat finishes

Shown: 1056-GT-AP-P11

Features:

- Mimi's simple flexing ergonomic design creates both lumbar and pelvic support
- Mimi is available in 11 molded colors
- Features matching armrest covers
- 300 lb. weight rating
- Wire frame high density stacking sled base or 4 leg steel tube with or without casters
- Wall saver legs prevent contact with walls
- Lifetime warranty on structural components
- Available in Q3 2017



GUEST 1030



GUEST 1040



GUEST 1050



GUEST 1051



GUEST 1055

Quick Ship: All 11 plastic colors ship as fast as 5 business days.

GSA SIN# 711-19 Pending

NEW

zoom

RAPID SETUP FOR A CREW OR A CROWD



Training, task, multipurpose, stool and conference seating

Upright locking back or free float

Choice of plastic or upholstered seat

Two powder coat frame finishes

50mm casters standard on model 1115-GT

Upright locking back or free float

Shown: 1115-GT-SF-PGA-US-C12

Features:

- Premium breathable mesh for the back in two coordinating colors
- Zoom is sold in two color combinations: PGA - gray with M32 gray mesh PWA - white with M33 white mesh
- Choose from two metal frame colors: silver and white
- Nesting model has torsion spring flex back
- Side mounted knobs to lock back in upright position or unlock for free float.
- Upholstered seat provides added level of comfort.
- Lifetime warranty on structural and mechanical components



TASK 1125



GUEST 1115



STOOLS 1126/1128



PLASTIC FINISHES

Quick Ship: ExpressShip fabrics ship as fast as 5 business days.

GSA SIN# 711-19

link

TRANSITIONAL STYLE WITH
LIMITLESS POSSIBILITIES



Soft touch polyurethane
arms available in black
or gray

Six powder coat
frame finishes

300 lb. weight
capacity

Available with or
without casters

Back available in plastic,
mesh or upholstered

Available with or
without arms

3 inch molded
foam seat

Wall Saver rear legs

Shown: 1410-GT-A15B-DG-MB



GUEST 1410



GUEST 1415

Features:

- Link comes standard with non-marring floor glides to protect floor surfaces
- Molded foam seat - environmentally friendly with no wood
- Convex back design provides lumbar support
- Stacks four high on optional dolly
- Anti-tip frame design with wall saver rear legs on model 1410 - prevents back from touching walls
- Model 1415 ships standard with 50mm carpet casters
- Fabric and foam are warranted against wear through and deterioration for five years
- Lifetime warranty on structural components

Quick Ship: ExpressShip fabrics and M1 mesh to ship as fast as 5 business days.

GSA SIN# 711-19

bella mesh

NAME YOUR GAME, BELLA IS READY TO PLAY



Mesh back provides tailored lumbar support for each user

Six powder coat frame finishes

Integrated wall saver frame prevents back from making contact with walls

250 lb. weight capacity



Choose from six mesh colors

Four leg Bella models can be configured with an optional right hand tablet arm

Available armless or choose from two arm options and folding a tablet arm

Shown: 1360-GT-A14-SF-US-M15

Features:

- Bella Mesh offers a wide range of seating solutions
- Mesh colors: Black (M11), Gray (M12) or Silver (M13), Green (M14), Red (M15), Blue (M16)
- All Bella Mesh models available armless (A00), with fixed arms (A12) or soft polyurethane padded arms (A14)
- Detachable basket available for four leg models
- Attractive high arc nylon base on task and stool configurations
- Four leg models stack ten high and DL1 Dolly (four high without optional cart)
- Lifetime warranty on structural and mechanical components



GUEST 1360



GUEST 1365



TASK 1375



STOOLS 1376/1378

Quick Ship: ExpressShip fabrics and M1 mesh to ship as fast as 5 business days.

GSA SIN# 711-19

bella

NAME YOUR GAME, BELLA IS READY TO PLAY



Convenient handle built into every back for ease of mobility

Six powder coat frame choices

Integrated wall saver frame prevents back from making contact with walls

250 lb. weight capacity



Choose all plastic, upholstered seat with plastic back or fully upholstered

Available armless or choose from two arm options and folding a tablet arm

Shown: 1310-GT-A12-BK-UP

Features:

- All Bella models available armless (A00), with fixed arms (A12) or soft polyurethane padded arms (A14)
- Attractive high arc nylon base on task and stool configurations
- Detachable basket available for four leg models
- Bella offers a wide range of seating solutions
- Four leg models stack ten high and DL1 Dolly (four high without optional cart)
- Lifetime warranty on structural and mechanical components



GUEST 1310



GUEST 1315



TASK 1325



STOOLS 1326/1328



NESTING

Quick Ship: ExpressShip fabrics and 11 plastic colors ship as fast as 5 business days. GSA SIN# 711-19

shuttle

THE ULTIMATE UTILITY CHAIR



Available with either black or gray arms

Six powder coat frame finishes

Available with or without casters or with sled base



Soft touch polyurethane arms for comfort and durability

Available as a stool in 24", 27" or 30" seat height

All models offer 300 lb. weight rating

Shown: 1215-GT-A18G-SF-AP-P03

Features:

- Model 1250 (Bariatric) has a 600 lb. weight rating and 30" wide seat
- All four leg and caster models stack ten high with optional rolling dolly for easy storage (four high without optional cart)
- All Shuttle models can be configured with an optional tablet arm either left or right
- Available in fully upholstered or 11 plastic colors for seat and back
- Standard non-marring floor glides protect floor surfaces (optional self-leveling glides are available)
- Lifetime warranty on structural and mechanical components



GUEST 1210



GUEST 1215



STOOLS
1210-ST24/27/30



BARIATRIC 1250

Quick Ship: ExpressShip fabrics and 11 plastic colors ship as fast as 5 business days. GSA SIN# 711-19

shuttle mesh

THE ULTIMATE UTILITY CHAIR



Integrated wall saver frame prevents rear legs and back from making contact with walls

Available with or without casters or with sled base



Soft touch polyurethane arms for comfort and durability

Available as a stool in 24", 27" or 30" seat height

All models offer 300 lb. weight rating

Shown: 1260-GT-A18B-BK-US-M25

Features:

- Standard height models stack ten high with optional rolling dolly for easy storage (four high without optional cart)
- Standard non-marring floor glides protect floor surfaces (optional self-leveling glides are available)
- All Shuttle models can be configured with an optional tablet arm either left or right
- Available with either gray or black arms
- Available in upholstered or 11 plastic colors for seat and 19 mesh colors for back
- Available with or without arms
- Lifetime warranty on structural and mechanical components



GUEST 1260



GUEST 1265



SLED 1280



STOOLS
1260-ST24/27/30

Quick Ship: ExpressShip fabrics and M2 mesh to ship as fast as 5 business days.

GSA SIN# 711-19

indy

FLEX BACK MOVEMENT YIELDS SUPERIOR COMFORT



Flex back provides 15 degrees of movement for user comfort

Available with or without arms

11 plastic colors to choose from

Durable wire rod frame available in black or chrome finishes

Floor glides feature integrated ganging capability

250 lb. weight capacity

Floor glides are a standard feature

Shown: 1020-GT-CF-UP-P05



GUEST 1010



GUEST 1020

Features:

- Indy's ergonomic features and great style ensure visitors sit comfortably
- AP models stack 33 chairs high with optional DL4 cart while maintaining clearance under an 80" doorway
- Fabric and foam are warranted for five years
- Indy ships standard with non-marring floor glides which feature integrated ganging clips for both arm-to-arm and armless-to-armless configurations
- Three upholstery options: all plastic (AP), upholstered seat (US) or all upholstered (UP)
- Lifetime warranty on structural components

Quick Ship: ExpressShip fabrics and 11 plastic colors ship as fast as 5 business days. GSA SIN# 711-19

kelley

NOTHING STACKS UP TO KELLEY



Seat and back available in 11 molded colors

Armed models feature matching armrest covers

Chrome finished sled shape frame

250 lb. weight capacity



Available with or without arms

Upholstered seat option

Non-marring floor glides featured upgrade

Shown: 1070-GT-CF-AP-P08

Features:

- Kelley is available in 11 molded colors
- Matching armrest covers
- Chrome finish in sled style wire frame
- Wall saver legs prevent contact with walls
- High density, multipurpose stacker with optional dolly
- Stacks nine high on the floor and 33 high on optional cart which maintains clearance under 80" doorway
- Optional ganging clips available
- Lifetime warranty on structural components



GUEST 1060



GUEST 1070



STOOL 1066



STOOL 1076

Quick Ship: ExpressShip fabrics and 11 plastic colors ship as fast as 5 business days. **GSA SIN# 711-19**

NEW

sophie

COMPLETE LOUNGE SEATING COLLECTION



High resilient molded foam on every seat and back upholstered in removable covers

Soft touch polyurethane arm rests available in Black or Gray



Versatile steel frame available in six powder coat finishes

Non-marring adjustable guides

Shown: 8111-GT-A80B-BF

Features:

- Complete lounge seating collection with robust design, made for high traffic reception and waiting areas
- Seat clean-out space combines comfort with easy maintenance
- Hip chair model as well as 30" wide Bariatric versions are available
- Multi-seating for the lobby, visitor comfort and maximum flexibility using single, double and triple seats and benches with or without interior arms as well as connecting and occasional tables
- Lifetime warranty on structural and mechanical components

Shipping: Standard lead times apply.

GSA SIN# 711-16 Pending



SINGLE 8111



DOUBLE 8112



TRIPLE 8113



HIP CHAIR 8118



BARIATRIC 8119

NEW

sophie tables

ANCILLARY TABLE SELECTIONS TO KEEP YOUR PLAN CONNECTED AND GUEST FRIENDLY



Choose from five laminate top color options

Versatile steel legs available in six powder coat finishes



Durable steel frame construction

Non-marring adjustable guides

Shown: 8190-TB-BL-SR

Features:

- Eight tables for versatile configurations
- The addition of these durable and appealing table options will enhance your layout and keep the space connected
- Strong, durable with an easy to clean powder coat paint finish
- 30°, 45°, 60°, 90° connecting tables provides ability to create multiple configuration angles for high traffic guest areas
- Choose from five high pressure laminate top colors
- Lifetime warranty on structural and mechanical components



8190
24" END TABLE



8191 CONNECTING
TABLE



8192 RECTANGLE
SUSPENSION TABLE



8193 ROUND
SUSPENSION TABLE



8195 ANGLED
SUSPENSION TABLE

Shipping: Standard lead times apply.

GSA SIN# 711-11 Pending



SIT IN STYLE, WORK IN COMFORT, GET THE VALUE



High resilient foam seat

Graphite mesh-back

Adjustable arms



217



216



203



176



103S

Features:

- No more waiting for items built-to-order. Win quick turn jobs and orders with immediate in-stock items that are ready to ship. When fast just isn't good enough
- Exceeding expectations with our most popular products without sacrificing style or reliability
- Rapid ship! @NCE ships in 24 Hours
- Unmatched quality and value backed by impeccable service even when the deadline is critical and the order requires precision
- Five year warranty on all structural and mechanical components. Mesh, fabric and foam are warranted against wear through and deterioration for five years

Quick Ship: @nce ships in 24 hours!

AVANT



Grade A Avant Chai



Grade A Avant Denim



Grade A Avant Reef



Grade A Avant Spruce



Grade A Avant Steel



Grade A Avant Waffle

BINGO



Grade A Bingo Black



Grade A Bingo Champagne



Grade A Bingo Cherry



Grade A Bingo Gray



Grade A Bingo Green



Grade A Bingo Navy

CREPE



Grade A Crepe Beige



Grade A Crepe Black



Grade A Crepe Dark Blue



Grade A Crepe Fern



Grade A Crepe Gray



Grade A Crepe Orange

ECHO



Grade A Echo Flint



Grade A Echo Hemloch



Grade A Echo Lynx



Grade A Echo Reflection



Grade A Echo Rose



Grade A Echo Stone

MATRIX



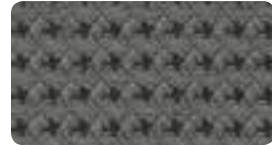
Grade A Champagne



Grade A Matrix Coal



Grade A Matrix Fern



Grade A Matrix Lead



Grade A Matrix Peacock



Grade A Matrix Plum

MOSAIC



Grade A Mosaic Carmel



Grade A Mosaic Flame



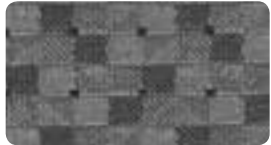
Grade A Mosaic Latte



Grade A Mosaic Nightfall



Grade A Mosaic Ocean



Grade A Mosaic Slate

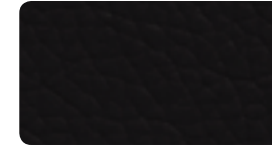
PAULY



Grade A Pauly Ash



Grade A Pauly Baltic



Grade A Pauly Black



Grade A Pauly Cafe



Grade A Pauly Caramel



Grade A Pauly Mahogany



Grade A Pauly Mist



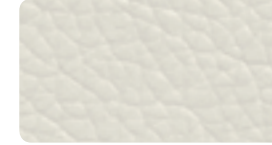
Grade A Pauly Mushroom



Grade A Pauly Saddle



Grade A Pauly Taupe



Grade A Pauly White

TANGO



Grade A Tango Bark



Grade A Tango Charcoal



Grade A Tango Honey



Grade A Tango Lake



Grade A Tango Ruby



Grade A Tango Wasabi

L4 LEATHER



L4 Sierra Ash



L4 Sierra Baltic



L4 Sierra Cafe



L4 Sierra Carmel



L4 Sierra Mahogany



L4 Sierra Mist



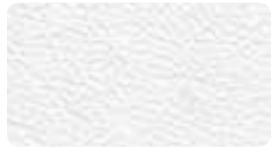
L4 Sierra Mushroom



L4 Sierra Saddle



L4 Sierra Taupe



L4 Sierra White

L4 Sierra Leather Match also available to ship in standard lead time. Full Grain Italian leathers matched with Polyurethane colors above.

L3 LEATHER



L3 Highlands Black

REDUCED ENVIRONMENTAL IMPACT

Pauly utilizes the latest technology for environmentally friendly, coated fabrics. It is a water-based polyurethane that is free of solvents, antimonies or other hazardous chemicals: PVC free, solvent/DMF free, formaldehyde free, phthalate free, heavy metal free and low VOC.

Use actual material samples for color matching and ordering. Colors of printed samples may vary from actual samples.

EXPRESS PLASTIC



Grade P P01 Black Swan



Grade P P02 Burgundy



Grade P P03 Coral Red



Grade P P04 Sunbonnet



Grade P P05 Whisper



Grade P P06 Boulder



Grade P P07 Dover Sky



Grade P P08 Essex Blue



Grade P P09 Pale Water

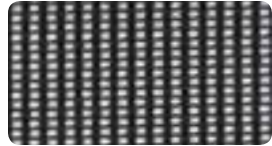


Grade P P10 Cinnabar

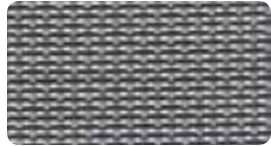


Grade P P11 Federal

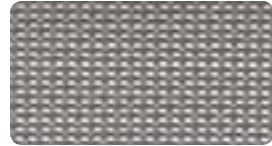
M1 MESH



Grade M1 M11 Black



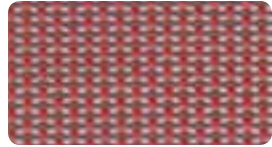
Grade M1 M12 Gray



Grade M1 M13 Silver



Grade M1 M14 Clover



Grade M1 M15 Poppy



Grade M1 M16 Sky

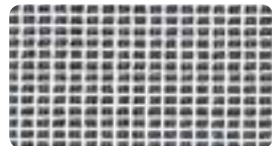
M2 MESH



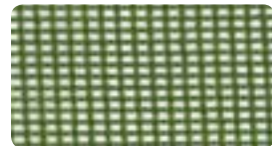
Grade M2 M21 Black



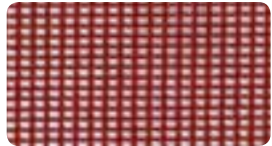
Grade M2 M22 Gray



Grade M2 M23 White



Grade M2 M24 Green



Grade M2 M25 Red



Grade M2 M26 Blue



Grade M2 M27 Orange



Grade M2 M28 Aqua

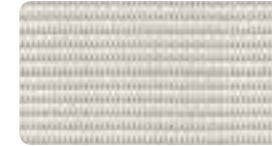
M3 MESH



Grade M3 M31 Graphite



Grade M3 M32 Slate



Grade M3 M33 Snow



Grade M3 M34 Sage



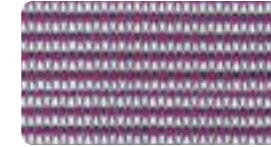
Grade M3 M35 Cardinal



Grade M3 M36 Royal



Grade M3 M37 Tangerine

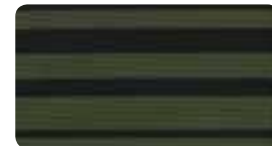


Grade M3 M38 Plum

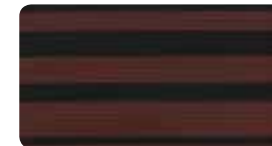
COSMO STRIPED MESH



Cosmo MS2 Gray



Cosmo MS4 Green



Cosmo MS5 Red



Cosmo MS6 Blue

AIR GRID MESH



Grade T01 AG Black

MESH MO



Grade MO MO Black

Made in America

Major Reshoring Effort

In a major reshoring effort to bring manufacturing jobs back to the United States, 9to5 Seating recently opened its third manufacturing facility in Union City, Tennessee. The facility is known as Made in America Seating, sister company to 9to5 Seating.

The experience and the hard work ethic of the American workforce, that make up Made in America Seating facility, bring the products closer to their point-of-use in the United States and surpass competitors' products from overseas.

Companies today demand the most for their money and 9to5 Seating is prepared to deliver the highest quality product without sacrificing selection or speed of delivery.

D3 Family of Brands



UNION CITY, TENNESSEE

Manufacturing, Exporting,
Building and Assembling Plant





Thinking & Acting Green

9to5 Seating is committed to sustainable and environmentally responsible business practices. This global perspective is endorsed and executed throughout every aspect of our corporate culture and within our distribution, manufacturing and the office facilities.

9to5 Seating is fully aware of the dire consequences of irresponsible manufacturing processes and mistreatment of the earth's resources. 9to5 Seating is a member of the U.S. Environmental Protection Agency's WasteWise Program established to eliminate costly municipal solid waste and select industrial wastes, benefiting the environment.

Also, we are proud to demonstrate our commitment by offering GREENGUARD Certified products and holding the prestigious LEED® Gold Certification for our corporate headquarters facility. It is an integral part of our corporate philosophy to provide the right equipment and education to our employees, regarding environment preserving activities. This ideology drives our endless commitment to a sustainable future.

9to5 Seating products:

- Contribute to healthier interior environments
- Add points for LEED Certification
- Manufactured using plastic, nylon, steel, aluminum and polypropylene components that are 100% recyclable
- Use supplies that share an earth-friendly philosophy
- Certified below chemical emissions limits for TVOC, Formaldehyde, Total Aldehydes, Individual VOCs, 4-phenylcyclohexene

Environmental Data Sheets for all 9to5 Seating products can be found at our website www.9to5seating.com.



PRODUCT CERTIFIED FOR
LOW CHEMICAL EMISSIONS
UL.COM/GG
UL 2818

GOLD



Preserving Resources,
Preventing Waste

Vertically Integrated

CAD DESIGN

CNC MOLD & DIE FABRICATION

PLASTIC INJECTION MOLDING

FOAM INJECTION MOLDING

METAL BENDING AND WELDING

ADVANCED ROBOTIC MANUFACTURING

ALUMINUM DIE CASTING & POLISHING

POWDER COAT FINISHING

TESTING LABORATORY





Looking forward

While 9to5 Seating has many years of experience in the manufacturing of office seating, we truly differentiate ourselves from our competitors through our vertical integration, with wholly owned manufacturing facilities in both the United States and Asia.

It is through this combination of vertical integration, with both domestic and foreign manufacturing, that we can offer the customer the product options and wide selection of upholstery at prices that rival foreign manufactured products.

Most of our competitors buy various parts from suppliers overseas. Since they do not own the factories supplying these components, they can neither control the consistency of the raw materials going into the product nor can they control the environment in which the part is manufactured.

At our factories, we ensure the quality of our materials by purchasing premium raw materials from world renowned suppliers such as BASF. Additionally, our factory operates at the highest environmental standards to ensure both the well-being of our employees and the planet.

Companies today and in the future, demand the most for their money without sacrificing quality, selection, and speed of delivery. 9to5 Seating is prepared to deliver.

Lifetime Warranty

9to5 Seating products are manufactured with meticulous attention to detail to achieve a level of quality that is free from defects in material and workmanship. In an effort to stand behind this philosophy, 9to5 Seating warrants to the original user of the product and from the original date of purchase, the following:

With the exception of products noted below Lifetime Warranty to the original end user, the company will repair or replace, at its option, without charge to the original purchaser only, factory defective structural and mechanical parts. This warranty is for single shift, standard commercial usage, defined as a standard 8 hour work day, five days a week. Weight limitations vary by product.

Upholstery fabric and foam is warranted against wear through and deterioration during normal usage for a period of five (5) years. However, the company does not warrant leather against routine scratching and scuffing, as all leather is subject to minor blemishes during use. COM and COL are not warranted. Due to natural variations in material, furniture containing leather is sold subject to normal variations and/or irregularities of color, texture, and grain.

For Aria High Back HD, Logic HD, Logic Plus, Enduro, Theory HD and Strata HD chairs, please contact customer service.

Should parts fail for any model during normal use within the applicable warranty period, please provide 9to5 Seating with a description of the failure and proof of purchase (Sales Order number located on the bottom of the chair) and if necessary you may need to return the defective part, freight prepaid to 9to5 Seating for inspection, repair and/or replacement, together with a copy of original sales receipt. Labor and installation service is not covered under warranty. Please do not send parts without prior authorization.

Send parts to: **9to5 Seating - Warranty Department**, 3211 Jack Northrop Avenue, Hawthorne, CA 90250

9to5 Seating will inspect the part in question, repair or replace at its option any defective part at no charge and return to the original purchaser.

This warranty does not apply to product or parts of product that have been subjected to misuse or abuse, accident, alteration, unauthorized repair or which have been damaged in transit. You agree to indemnify and hold harmless 9to5 Seating, its officers, directors, shareholders, employees, and agents from any actions, claims, demands, damages, liabilities, costs, and strict liability in tort or contract, or any other legal theory arising out of the misuse or abuse, alteration, or damage in transit of the product.

LIMITATION OF LIABILITY

Under no circumstance, including but not limited to breach of contract, breach of warranty or negligence, shall 9to5 Seating be liable for lost profits, loss of goodwill, stored data, general, special, consequential or exemplary damages, even if 9to5 Seating had notice of these damages or they were foreseeable. 9to5 Seating shall not be responsible for verifying dealer's or customer's description of needs, data, or the fitness for a particular purpose of goods. 9to5 Seating's Liability in all cases shall be limited to repair or replacement of the defective parts, or the purchase price of the product. Damages resulting from misuse, abuse, alteration, negligence, or accidents are not covered under this warranty.

9to5 Seating makes no warranty that any of its products are suitable for any particular purpose and makes no other warranties, express or implied, other than those set out here. As codes and standards vary from one jurisdiction to another, references to compliance are solely for convenience and without any representation as to accuracy or suitability. Users must verify the suitability of such information or product for their specific application. In no event shall 9to5 Seating be liable in either tort or contract for any loss or direct, special, incidental, consequential, or exemplary, damages.

ANSI/BIFMA







The Business and Institutional Furniture Manufacturer's Association (BIFMA) has developed tests which have been approved by the American National Standards Institute (ANSI) for determining the strength and durability of seating in its everyday use. This statement does not serve as a warranty or guarantee, however 9to5 Seating products found within this price list generally meet or exceed applicable BIFMA and ANSI standards.

For complete text of warranty, please call 9to5 Seating at: **310.220.2500**

EXCEPT AS OTHERWISE PROVIDED, 9to5 Seating MAKES NO OTHER WARRANTIES, EXPRESS OR IMPLIED, INCLUDING BUT NOT LIMITED TO THE WARRANTIES OF MERCHANTABILITY AND FITNESS FOR A PARTICULAR PURPOSE.

Index

Task/Work





| | | |
|-------------------|----|---|
| Sol | 6 |  |
| Luna..... | 8 |  |
| Core..... | 10 |  |
| Cydia UP | 12 |  |
| Cydia | 14 | |
| Cosmo UP | 16 |  |
| Cosmo Mesh | 18 |  |
| Vesta..... | 20 | |
| Aria | 22 | |
| Theory | 24 | |
| Strata Mesh | 26 | |
| Strata..... | 28 | |
| Vault..... | 30 | |
| Brio | 32 | |
| Enduro | 34 | |

| | |
|-----------------|----|
| Logic Plus..... | 36 |
| Logic..... | 38 |
| Precept..... | 40 |
| Agent | 42 |

Executive/Conference

| | | |
|---------------|----|---|
| Acclaim | 44 |  |
| Diddy | 46 |  |
| Bristol | 48 | |
| Cayman | 50 | |
| Axis | 52 | |
| Cortina | 54 | |

Guest/Stacking/Nesting

| | | |
|----------------------|----|---|
| Mimi | 56 |  |
| Zoom | 58 |  |
| Link* | 60 | |
| Bella Mesh* | 62 | |
| Bella* | 64 | |
| Shuttle* | 66 | |
| Shuttle Mesh* | 68 | |
| Indy..... | 70 | |
| Kelley..... | 72 | |
| Sophie* | 74 |  |
| Sophie Tables* | 76 |  |



| | |
|------------|----|
| @nce | 78 |
|------------|----|

Textiles & Fabrics

| | |
|----------------------|----|
| Avant | 80 |
| Bingo | 80 |
| Crepe..... | 81 |
| Echo | 81 |
| Matrix | 82 |
| Mosaic..... | 82 |
| Pauly..... | 83 |
| Tango | 83 |
| Leather | 84 |
| Express Plastic..... | 85 |
| Mesh | 86 |

*Frames now offer 6 powder coat color options.